



Kasarda Demographic Study

Tom Leonard & Cynthia Jaskowiak



Overview

- Historical and Current Status:
Enrollment Patterns and Determinants
- Kasarda Assumptions and Methodology
- Forecasts and Enrollment Changes
- Projections
- Summary and Discussion

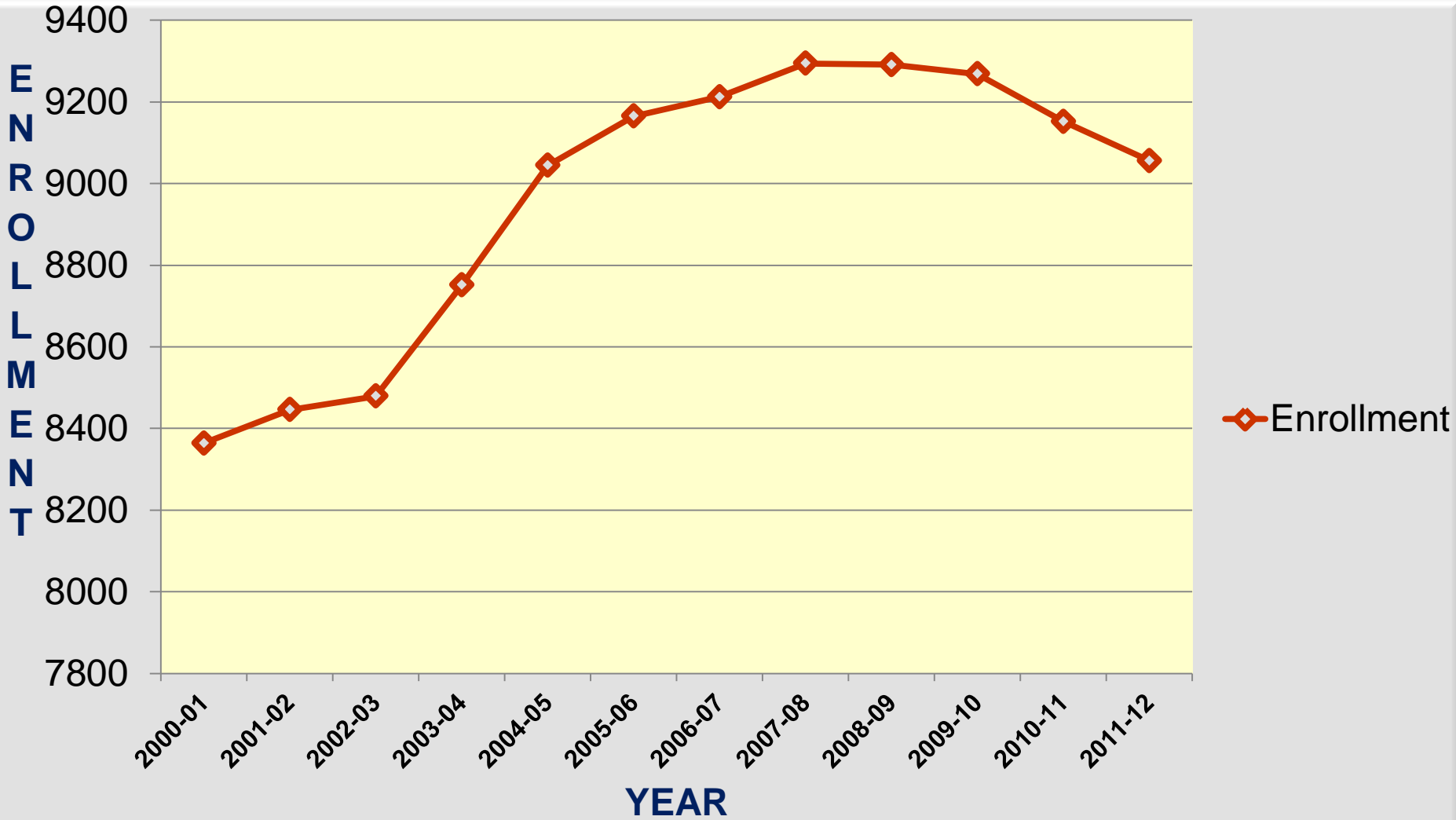


Overview

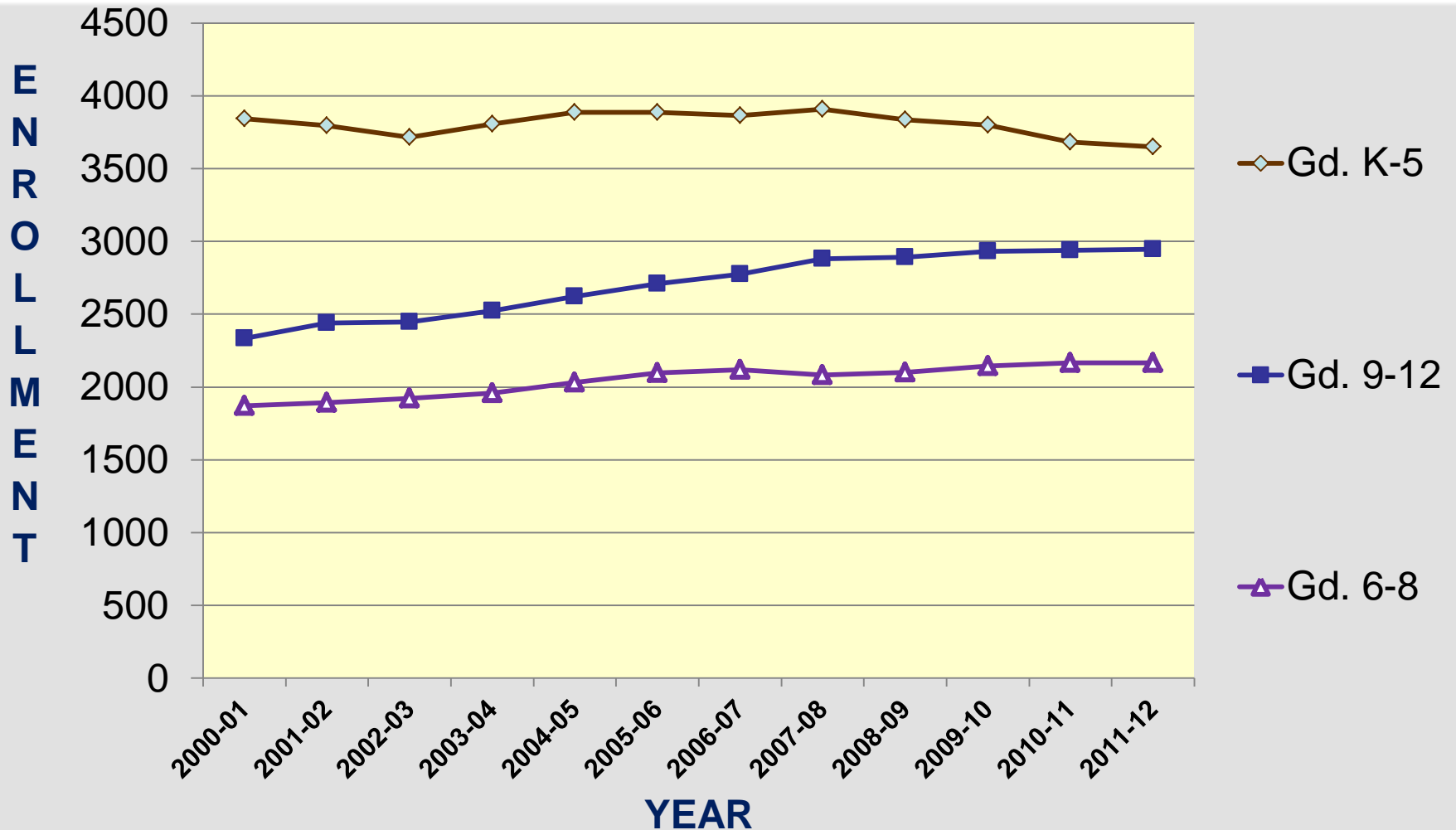
- **Historical and Current Status:
Enrollment Patterns and Determinants**
- Kasarda Assumptions and Methodology
- Forecasts and Enrollment Changes
- Projections
- Summary and Discussion

District Enrollment Trend

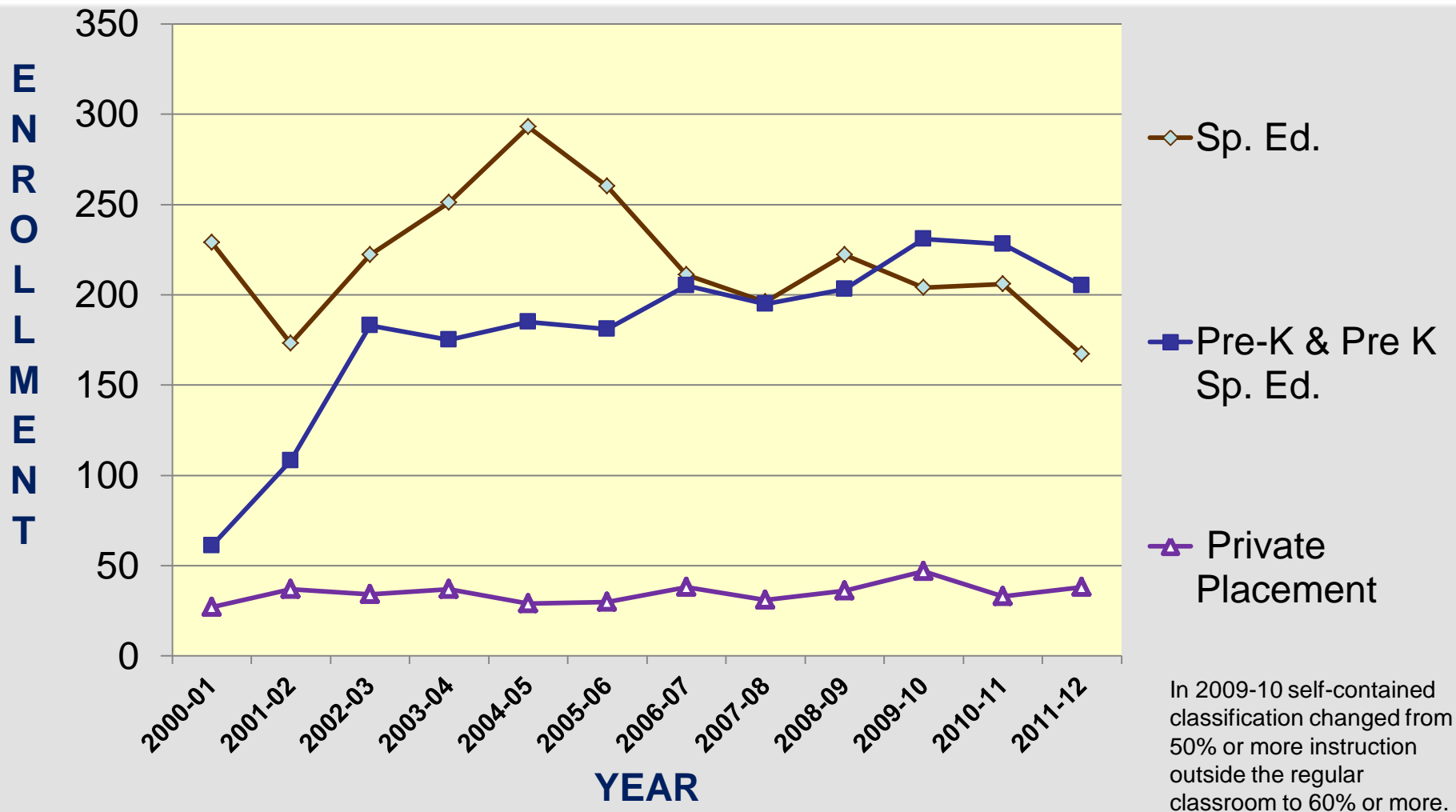
2000-2011



District Enrollment Trend / Grade Level 2000-2011



District Enrollment Trend / Grade Level 2000-2011

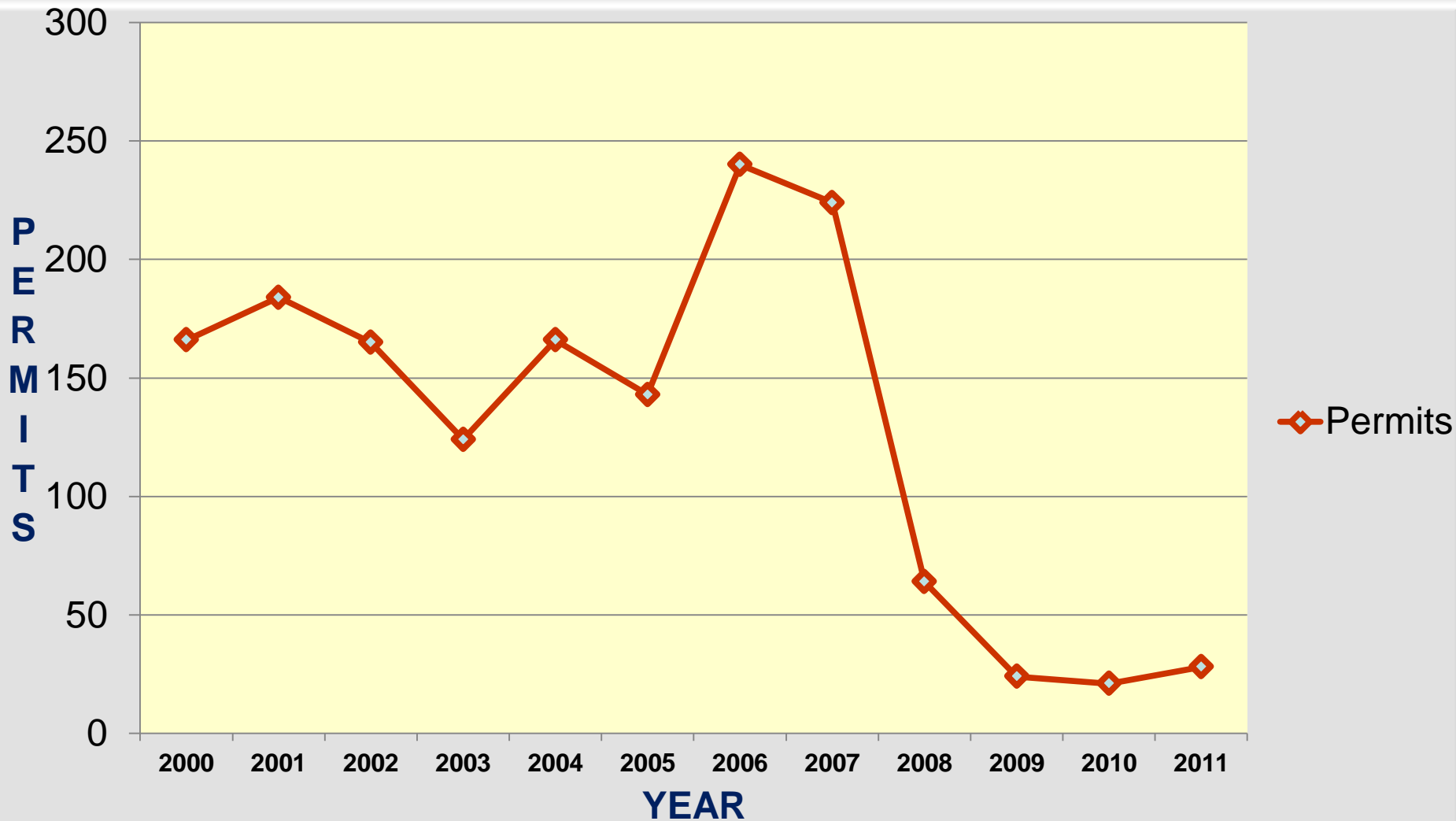


GROWTH

Housing Unit Building Permits

Single Family/District Wide

2000-2011 (table 1, page 7)



District Wide***Percent of Population by Age******2000-2011 (adapted from table 2, page 8)***

	1990	2000	2010
Under 5	6%	6%	4%
Ages 5-13	13%	15%	14%
Ages 14-17	6%	7%	7%
65 and over	9%	12%	18%



Overview

- Historical and Current Status:
Enrollment Patterns and Determinants
- **Kasarda Assumptions and Methodology**
- Forecasts and Enrollment Changes
- Projections
- Summary and Discussion

Kasarda Assumptions

SERIES A

Enrollment projection assuming resident fertility rates remain constant (through 2016) and future residential development, housing turnover and immigration of families with preschool and school-age children to each attendance area are less than currently anticipated through 2021.

SERIES B

Enrollment projection assuming resident fertility rates remain constant (through 2016) and future residential development, housing turnover and immigration of families with preschool and school-age children to each attendance area occur as currently anticipated through 2021.

SERIES C

Enrollment projection assuming resident fertility rates remain constant (through 2016) and future residential development, housing turnover and immigration of families with preschool and school-age children to each attendance area are greater than currently anticipated through 2021.



Kasarda Methodology

Projections are based on several factors including:

- Fertility Rates
- Family Sizes
- Population Forecasts
- Household Forecasts
- Annual Enrollment Change
 - ✓ Entering K vs. Exiting 12
 - ✓ Transfer Migration Data
 - ✓ Special Ed/Pre-School



Overview

- Historical and Current Status:
Enrollment Patterns and Determinants
- Kasarda Assumptions and Methodology
- **Forecasts and Enrollment Changes**
- Projections
- Summary and Discussion

Population Forecasts (Table 45, page 68)

Village	2010*	2030**	Change 2010-2030	
			#	%
Barrington	10,327	10,429	102	1.0
Barrington Hills	4,209	5,060	851	20.2
Deer Park	3,200	3,846	646	20.2
Inverness	7,399	8,039	640	8.6
Lake Barrington	4,973	5,695	722	14.5
North Barrington	3,047	3,542	495	16.2
South Barrington	4,565	4,657	92	2.0
Tower Lakes	1,283	1,442	159	14.1
TOTAL	39,003	42,710	3,707	9.5

Source:

* U.S. Bureau of the Census. *Decennial Census of Population and Housing, 2010.*

** *Northeastern Illinois Planning Commission. 2030 Forecasts of Population, Households and Employment by County and Municipality.*

Revised September 27, 2006. "Chicago Metropolitan Agency for Planning 2040 Forecast of Population, Households and Employment," adopted on 13 October 2010.

Household Forecasts (Table 45, page 68)

Village	2010*	2030**	Change 2010-2030	
			#	%
Barrington	4,234	4,001	-233	-5.5
Barrington Hills	1,501	1,777	276	18.4
Deer Park	1,097	1,311	214	19.5
Inverness	2,706	2,795	89	3.3
Lake Barrington	2,252	2,220	-32	-1.4
North Barrington	1,066	1,291	225	21.1
South Barrington	1,445	1,513	68	4.7
Tower Lakes	439	494	55	12.5
TOTAL	14,740	15,402	662	4.5

Source:

* U.S. Bureau of the Census. *Decennial Census of Population and Housing, 2010.*

** *Northeastern Illinois Planning Commission. 2030 Forecasts of Population, Households and Employment by County and Municipality. Revised September 27, 2006. "Chicago Metropolitan Agency for Planning 2040 Forecast of Population, Households and Employment," adopted on 13 October 2010.*

Kasarda:

Summary of District Enrollment Change 2001-2005 (Table 5, page 16)

Transition Year Sept. to Sept.	Total Enrollment Change
2001 – 2002	33
2002 – 2003	272
2003 – 2004	293
2004 – 2005	121
2005 – 2006	47

*Entering kindergarten vs. Existing 12; Net Student Migration/Transfers; Changes in Special Ed,
Pre school, SEDOL & PP*

Kasarda:

Summary of District Enrollment Change 2006-2011 (Table 5, page 16)

Transition Year Sept to Sept	Total Enrollment Change
2006 – 2007	82
2007 – 2008	-3
2008 – 2009	-23
2009 – 2010	-116
2010 – 2011	-96

Kasarda: Elementary Enrollment Change 2001-2006 (Table 8, page 21)

Transition Year Sept. to Sept.	Elementary Enrollment Change
2001 – 2002	-105
2002 – 2003	164
2003 – 2004	78
2004 – 2005	0
2005 – 2006	-12

Kasarda: Elementary Enrollment Change 2006-2011 (Table 8, page 21)

Transition Year Sept. to Sept.	Elementary Enrollment Change
2006 – 2007	47
2007 – 2008	-74
2008 – 2009	-31
2009 – 2010	-104
2010 – 2011	-50



Kasarda: Middle School Enrollment Change 2001-2006 (Table 8, page 21)

Transition Year Sept. to Sept.	Middle School Enrollment Change
2001 – 2002	-9
2002 – 2003	45
2003 – 2004	86
2004 – 2005	30
2005 – 2006	22



Kasarda: Middle School Enrollment Change 2006-2011 (Table 8, page 21)

Transition Year Sept. to Sept.	Middle School Enrollment Change
2006 – 2007	-62
2007 – 2008	11
2008 – 2009	24
2009 – 2010	14
2010 – 2011	-4

Kasarda: High School Enrollment Change 2001-2006 (Table 8, page 21)

Transition Year Sept. to Sept.	High School Enrollment Change
2001 – 2002	92
2002 – 2003	99
2003 – 2004	125
2004 – 2005	94
2005 – 2006	14



Kasarda: High School Enrollment Change 2006-2011 (Table 8, page 21)

Transition Year Sept. to Sept.	High School Enrollment Change
2006 – 2007	115
2007 – 2008	26
2008 – 2009	15
2009 – 2010	-13
2010 – 2011	-12



Overview

- Historical and Current Status:
Enrollment Patterns and Determinants
- Kasarda Assumptions and Methodology
- Forecasts and Enrollment Changes
- **Projections**
- Summary and Discussion

Kasarda Projections

Barrington 220 Summary

(Tables 85, 86 & 87 – pages 117-119)

	2012 -	2013 -	2014 -	2015 -	2016 -	2017 -	2018 -	2019 -	2020 -	2021 -	Net Chg
	2013	2014	2015	2016	2017	2018	2019	2020	2021	2022	
Series A	8,808	8,588	8,414	8,218	8,024	7,909	7,820	7,748	7,663	7,589	-1219
Series B	8,971	8,893	8,855	8,793	8,725	8,691	8,682	8,683	8,663	8,644	-327
Series C	9,147	9,218	9,319	9,387	9,436	9,438	9,459	9,486	9,488	9,483	+336

Kasarda Projections Elementary Schools

(Tables 70, 71 & 72 – pages 102-104)

	2012 -	2013 -	2014 -	2015 -	2016 -	2017 -	2018 -	2019 -	2020 -	2021 -	Net Chg
	2013	2014	2015	2016	2017	2018	2019	2020	2021	2022	
Series A	3,693	3,537	3,400	3,312	3,279	3,305	3,358	3,398	3,432	3,451	- 242
Series B	3,778	3,693	3,620	3,587	3,599	3,654	3,712	3,753	3,789	3,815	+ 37
Series C	3,866	3,850	3,837	3,847	3,900	3,953	3,991	4,023	4,056	4,086	+220

Kasarda Projections

Middle Schools - Combined

(Tables 79, 80 & 81 – pages 111-113)

	2012 -	2013 -	2014 -	2015 -	2016 -	2017 -	2018 -	2019 -	2020 -	2021 -	Net Chg
	2013	2014	2015	2016	2017	2018	2019	2020	2021	2022	
Series A	2,136	2,095	2,065	2,018	1,907	1,799	1,711	1,682	1,687	1,718	- 418
Series B	2,167	2,158	2,163	2,153	2,076	1,997	1,942	1,942	1,967	2,005	+162
Series C	2,200	2,223	2,261	2,289	2,248	2,180	2,148	2,159	2,188	2,204	+4

Kasarda Projections

Middle School - Prairie

(Tables 73, 74 & 75 – pages 105-107)

	2012 -	2013 -	2014 -	2015 -	2016 -	2017 -	2018 -	2019 -	2020 -	2021 -	2022 -	Net Chg
	2013	2014	2015	2016	2017	2018	2019	2020	2021	2022		
Series A	1,133	1,078	1,068	1,017	956	900	865	846	827	813		- 320
Series B	1,156	1,132	1,161	1,153	1,134	1,103	1,081	1,063	1,062	1,079		-77
Series C	1,178	1,180	1,243	1,270	1,288	1,288	1,298	1,302	1,313	1,323		+145

Kasarda Projections

Middle School - Station

(Tables 76, 77 & 78 – pages 108-110)

	2012 -	2013 -	2014 -	2015 -	2016 -	2017 -	2018 -	2019 -	2020 -	2021 -	Net Chg
	2013	2014	2015	2016	2017	2018	2019	2020	2021	2022	
Series A	975	951	885	855	781	734	704	799	799	797	-178
Series B	1,006	1,018	992	998	952	903	865	857	879	903	-103
Series C	1,038	1,084	1,097	1,132	1,118	1,089	1,070	1,103	1,103	1,126	+88

Kasarda Projections

Barrington High School

(Tables 82, 83 & 84 – pages 114-116)

	2012 -	2013 -	2014 -	2015 -	2016 -	2017 -	2018 -	2019 -	2020 -	2021 -	2022 -	Net Chg
	2013	2014	2015	2016	2017	2018	2019	2020	2021	2022		
Series A	3,003	2,982	2,975	2,918	2,868	2,833	2,782	2,698	2,574	2,449		-554
Series B	3,041	3,058	3,088	3,070	3,064	3,059	3,049	3,008	2,927	2,845		-196
Series C	3,089	3,151	3,226	3,258	3,294	3,314	3,331	3,314	3,252	3,203		+114

Kasarda Projections

Barrington 220 Summary

(Tables 85, 86 & 87 – pages 117-119)

	2012 -	2013 -	2014 -	2015 -	2016 -	2017 -	2018 -	2019 -	2020 -	2021 -	Net Chg
	2013	2014	2015	2016	2017	2018	2019	2020	2021	2022	
Series A	8,808	8,588	8,414	8,218	8,024	7,909	7,820	7,748	7,663	7,589	-1219
Series B	8,971	8,893	8,855	8,793	8,725	8,691	8,682	8,683	8,663	8,644	-327
Series C	9,147	9,218	9,319	9,387	9,436	9,438	9,459	9,486	9,488	9,483	+336

Kasarda:

Medium/Long-Term Projections

(Tables 85, 86 & 87 – pages 117-119)

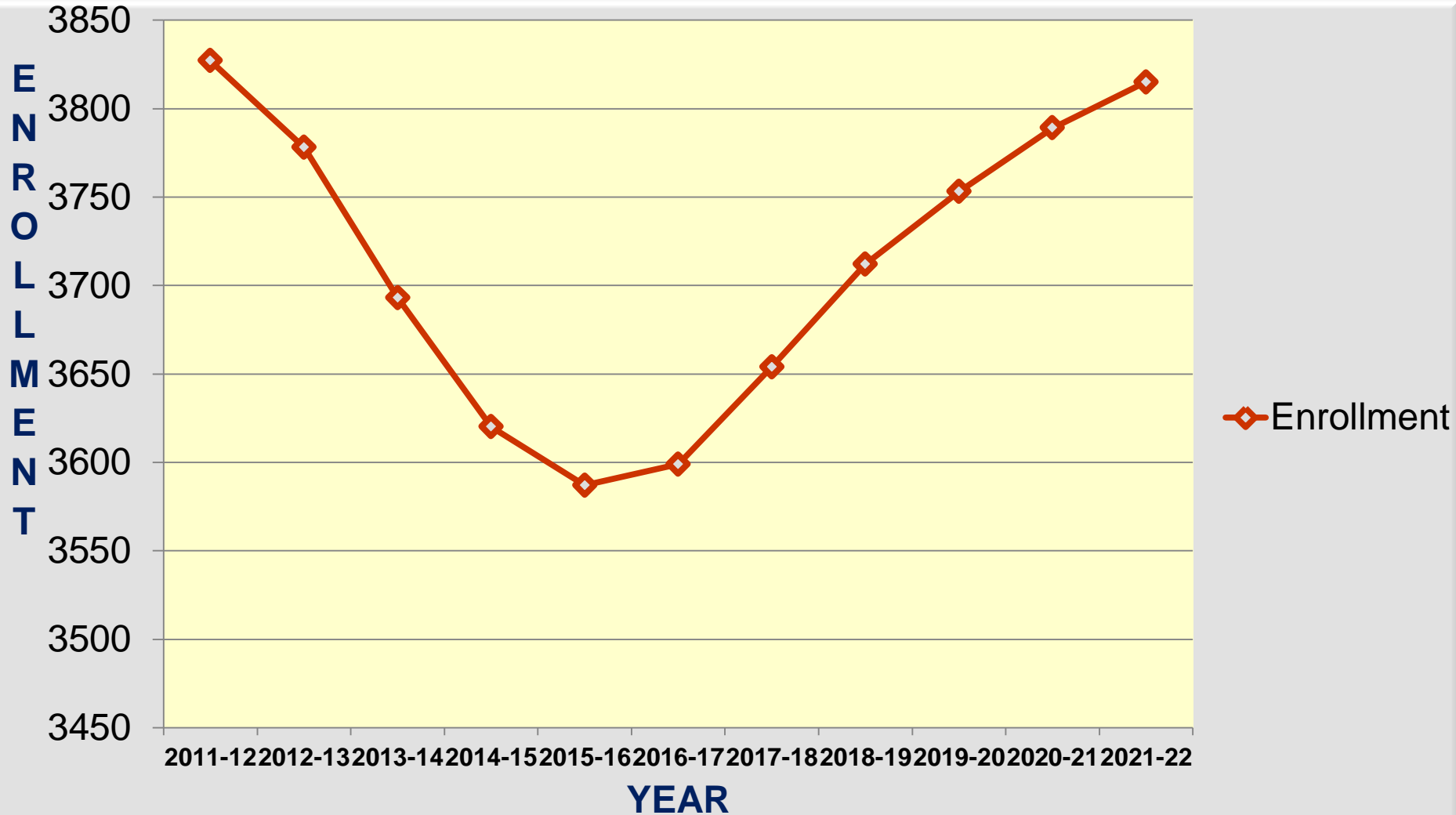
	2011-12	Projection 2012-13	Projection 2016-17	Projection 2021-22
Series A	9,056	8,808	8,024	7,589
Series B	9,056	8,971	8,725	8,644
Series C	9,056	9,147	9,436	9,483

GROWTH

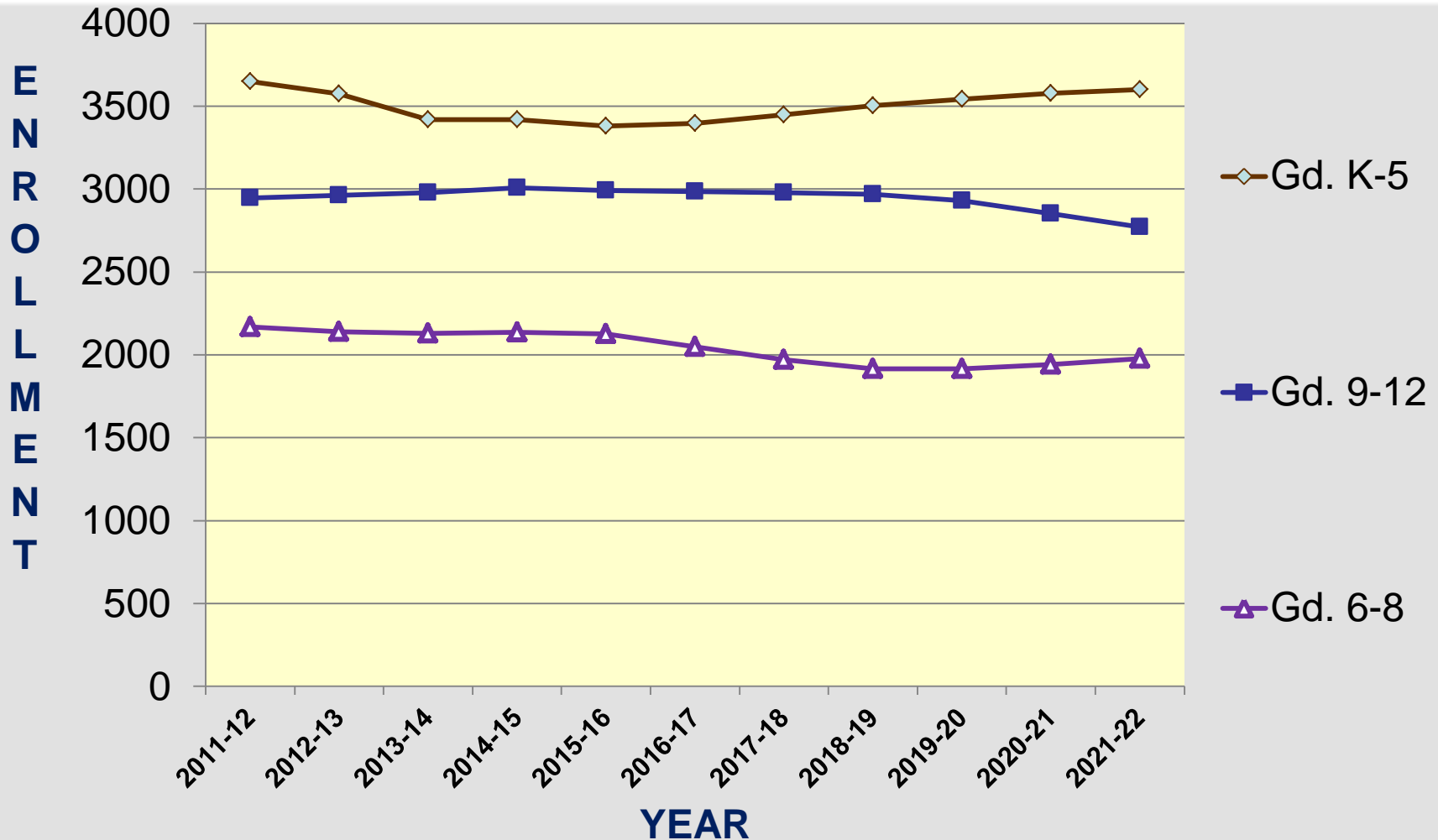
Combined Elementary Projections

2011 -2022

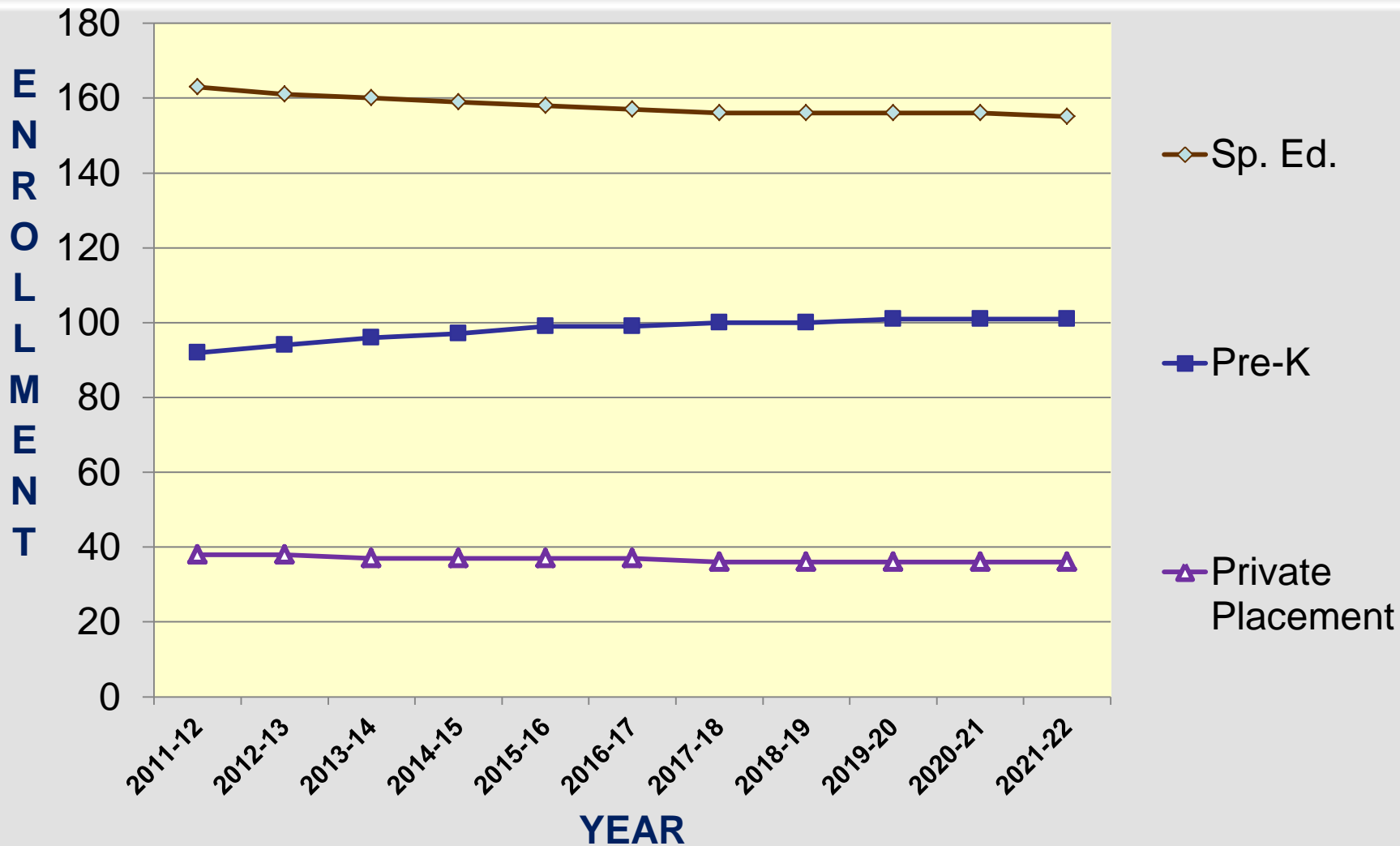
(Series B) table 71, p 103



District Projections (Series B) - Grade Level 2011 – 2012 UPDATE



District Projections (Series B) - Grade Level 2011 – 2012 UPDATE





Overview

- Historical and Current Status:
Enrollment Patterns and Determinants
- Kasarda Assumptions and Methodology
- Forecasts and Enrollment Changes
- Projections
- **Summary and Discussion**



Kasarda Summary

- **The economic downturn is being reflected in Barrington 220 with a significant decline in single housing starts and depressed existing housing markets (increased *65 and older age* distribution as homeowners “stay put”).**
- **There is no crystal ball on the economy as it will affect housing turnover to younger family households.**
- **Kasarda does not anticipate significant changes in fertility or family sizes over the next 5 years (effects elementary enrollment starting 2017-18).**



Kasarda Summary *(con't)*

- **In past Kasarda Demographic Trends and Projections report, the district has been tracking primarily on the Series B Level. Planning is moving forward with Series B on a macro-level.**
- **Individual elementary projections are challenging given the lack of predictability in attendance patterns with district programs (Chinese Immersion, Spanish Dual Language, Choice, Petition)**
- **More students are graduating than are entering in kindergarten, despite increased in-migration and transfers. In the more immediate future, anticipate depressed future enrollment growth.**

DISCUSSION

